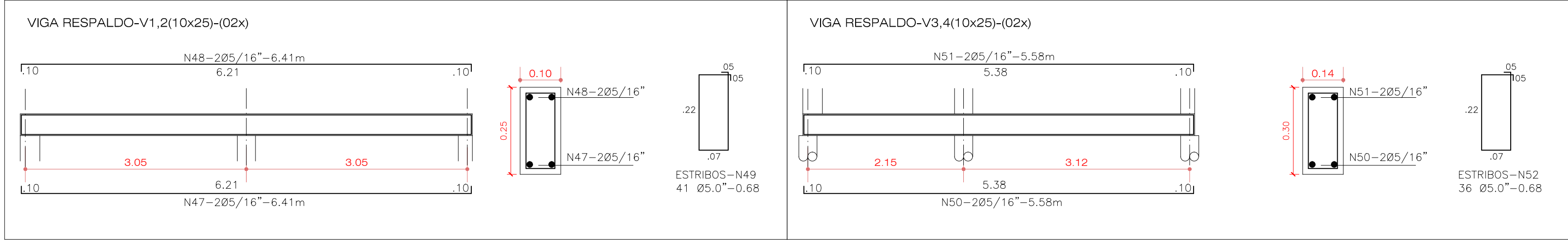
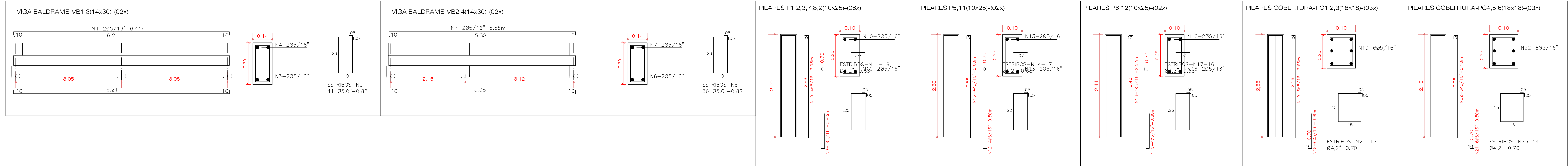
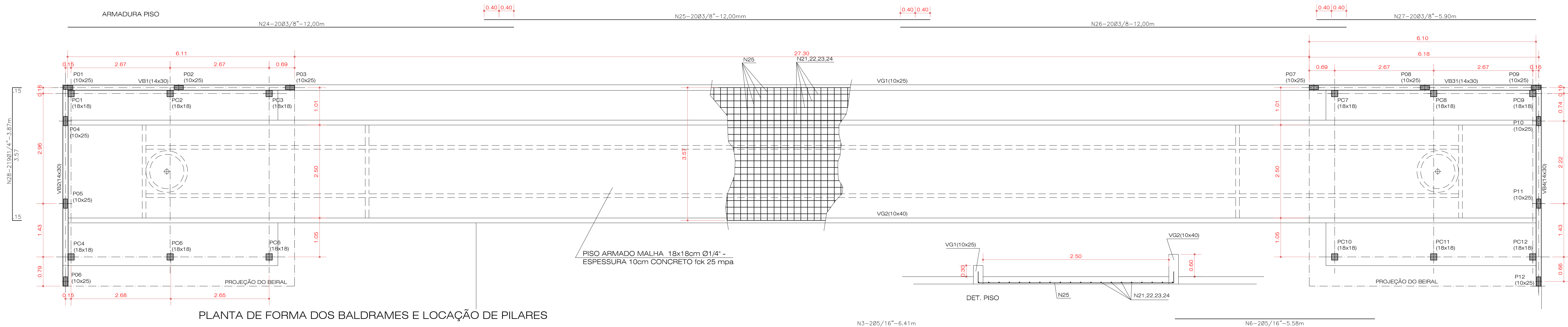


RESUMO TOTAL DOS FERROS-CONCRETO-(VIGAS RESPALDO)							
VIGAS	AÇO	POS.	BIT(mm)	QUANT.	TOTAL(m)	kg/m	P(kg+10%)
	CA-50					TOTAL(kg)	
FERRO	CA-50		5/16"		95,92	0.395	37,88
	CA-50					0.154	41,67
TOTAL GERAL	CA=60	5.0			104,72	0.154	16,12
	CA=50						17,73
					CONCRETO Fck 25MPa.		0,65m3
					FORMAS		12,00m2



RESUMO TOTAL DOS FERROS-CONCRETO-(BALDRAMES-PILARES)								
					COMPRIMENTO			
VIGAS	AÇO	POS.	BIT(mm)	QUANT.	TOTAL(m)	kg/m	TOTAL(kg)	P(kg+10%)
FERRO	CA=50		5/16"		359,50	0.395	142,00	156,20
	CA=50						142,00	156,20
	CA=50							
TOTAL GERAL:	CA=50		5/0		314,50	0.154	48,43	53,27
CONCRETO Fck 25MPa.					2,22m3			
FORMAS					30,20m2			

[illegible]

RESUMO TOTAL DOS FERROS-CONCRETO-(ESTACAS)								
VIGAS	COMPRIMENTO					kg/m	TOTAL(kg)	P(kg+10%)
	AçD	POS	BIT(mm)	QUANT	TOTAL(m)			
FERRO	CA-50							
	CA-50		5/16"		270,00	0.395	106,65	117,31
	CA-50						106,65	117,31
TOTAL	CA-60		5.0		216,00	0.154	33,26	36,59
TOTAL	CA-50							
CONCRETO Fck 20MPa.							2.68m3	
QUANTIDADE DE ESTACAS							54,00m	

